



UNIDO
Industrial Statistics Database
at the 3- and 4-digit level of ISIC Code (Revision 3)

INDSTAT4 2010 ISIC Rev.3

User's Guide

Prepared by

Statistics Unit

© United Nations Industrial Development Organization

Table of Contents

	Page
INTRODUCTION	3
DATA	4
Data Description.....	4
Data Definition.....	4
INDSTAT4 2010 ISIC Rev.3 Data Record.....	5
OPERATING INSTRUCTIONS	6
Basic Tools.....	6
Menu Bar.....	7
Main Window/Data Selection.....	7
Selecting Data.....	8
Unselecting Data.....	8
Browse.....	9
Browse Metadata.....	10
Availability Display.....	11
Export to EXCEL.....	12
Export in ASCII (text) format or CSV (Comma Separated Values) format.....	14
CONTACT POINT AT UNIDO	15
ANNEXES	16
Annex I - Country Code List.....	16
Annex II – ISIC Code List.....	20
Annex III - ISIC Combination Code List.....	25
Annex IV - Table Code List.....	39
Annex V - Table Definition Code List.....	40
Annex VI - Source Code List.....	41
Annex VII - Standard Concepts and Definitions.....	42

INTRODUCTION

The INDSTAT4 2010 ISIC Rev.3 database contains time series data for the period 1990 to 2007 and for 126 countries. The data are arranged at the 3- and 4-digit level of the International Standard Industrial Classification of All Economic Activities (ISIC) Revision 3 pertaining to the manufacturing sector, which comprises 151 manufacturing categories.

INDSTAT4 2010 ISIC Rev.3 is a retrieval system running on an IBM-PC or compatible computer in an MS Windows 32-bit environment. The system allows the user to select, retrieve and export data (and metadata) for further processing.

INDSTAT4 2010 ISIC Rev.3 Windows features include:

- User-friendly graphics interface
- Data selection by country, year and ISIC
- Data Availability display
- Browsing of selected data in record sequence
- Data Export facilities to:
 - Excel spreadsheet (*.xls)
 - Comma Separated Values files (*.csv)
 - ASCII text files (*.txt)

* * * * *

Note: In recent years most countries that report their industrial statistics to UNIDO have made a switchover from International Standard Industrial Classification of All Economic Activities (ISIC) Revision 2 to ISIC Revision 3 and a few of them to ISIC Revision 4. These countries now provide their industrial statistics that are based on or related either to ISIC Revision 3 or to ISIC Revision 4. As of 2010, UNIDO has discontinued the production of INDSTAT4-Rev.2, which was a co-product of INDSTAT4-Rev.3 in the past.

* * * * *

DATA

Data Description

SOURCES OF INFORMATION

Data from non-OECD countries were collected from national statistical offices by UNIDO. Data from OECD member countries were collected by OECD and provided to UNIDO in order to achieve worldwide coverage. All data are supplemented with estimates generated by UNIDO.

UPDATING THE DATABASE

Updates of the database are made yearly and contain data for at least one additional year for most of the countries and may also include additional countries. Data revisions and extensions in coverage may go as far back as 1990 (1985 in a few cases).

METADATA (M)

In support of the statistical data, relevant meta-information - if reported by the country - are available to the user.

The metadata ranges from information concerning:

- the national data compilation scheme
- classification applied
- concept and definitions
- cell-level footnotes

Data Definition

CONTENT AND COVERAGE

The database contains annual time-series data on the following items:

Number of establishments

Employment

Wages and salaries

Output

Value added

Gross fixed capital formation

Number of female employees

These data pertain to manufacturing industries classified at the 3- and 4-digit level of ISIC (Revision 3) and are presented by Country, Industry and Year. The data are originally stored in national currency values at current prices. The system allows conversion of currency data from national currency into current US dollars, using the average period exchange rates as given in the International Financial Statistics (IFS) under series rf.

INDSTAT4 2010 ISIC Rev.3 Data Record

TABLE CODES are codes assigned to the seven selected data items (see Annex IV).

COUNTRY CODES pertain to UN country/area codes (see Annex I).

YEAR is the calendar year to which the value field refers (for exceptions see Country Metadata).

ISIC CODES are those of ISIC (Revision 3) at the 3- & 4-digit level (see Annex II).

ISIC COMBINATION CODES denote the combination of two or more ISICs (see Annex III).

VALUE

- Tables 01, 04 and 31 are in numbers
- Tables 05, 14, 20 and 21 are in national currency or current US\$ (depending on user's choice).

TABLE DEFINITION CODES refer to the statistical definition employed for the respective value (see Annex V).

SOURCE CODE describes the source of the data (see Annex VI).

UPDATE YEAR denotes the last update of the record (yyyy).

UNIT shows the unit of value for each record (e.g. employment in numbers, wages and salaries in national currency or US dollars), specifically:

= number

N = value in current national currency

\$ = value in current US dollars

OPERATING INSTRUCTIONS

Basic Tools

When your application is launched you will see the **Selection Board** with four **Selection Windows**: Countries, ISIC categories, Years and Tables.

Select the desired items from each window.

Use the Toolbar buttons to perform any of the following actions:

To **display** values or availability of data use the following buttons:



Displays Values



Displays Data Availability

To **choose** between **National Currency** or **US-Dollars** use the following buttons:



Displays Data in Current National (=Local) Currency



Displays Data in Current US Dollars

To **export** data use the following buttons:



Exports to an Excel sheet.



Exports to a CSV File.



Exports to a Text File.

To **return** to the selection board use:



Data Selection

For additional help use:



Help

To **EXIT** the application go to **File/Exit menu option**.

Menu Bar

Navigating along the Windows menu bar, the user is given the capability to browse the selected data as a table, to view availability of data and to export the data into an Excel (*.xls) file, a Comma Separated Values (*.csv) file or a Text (*.txt) file.

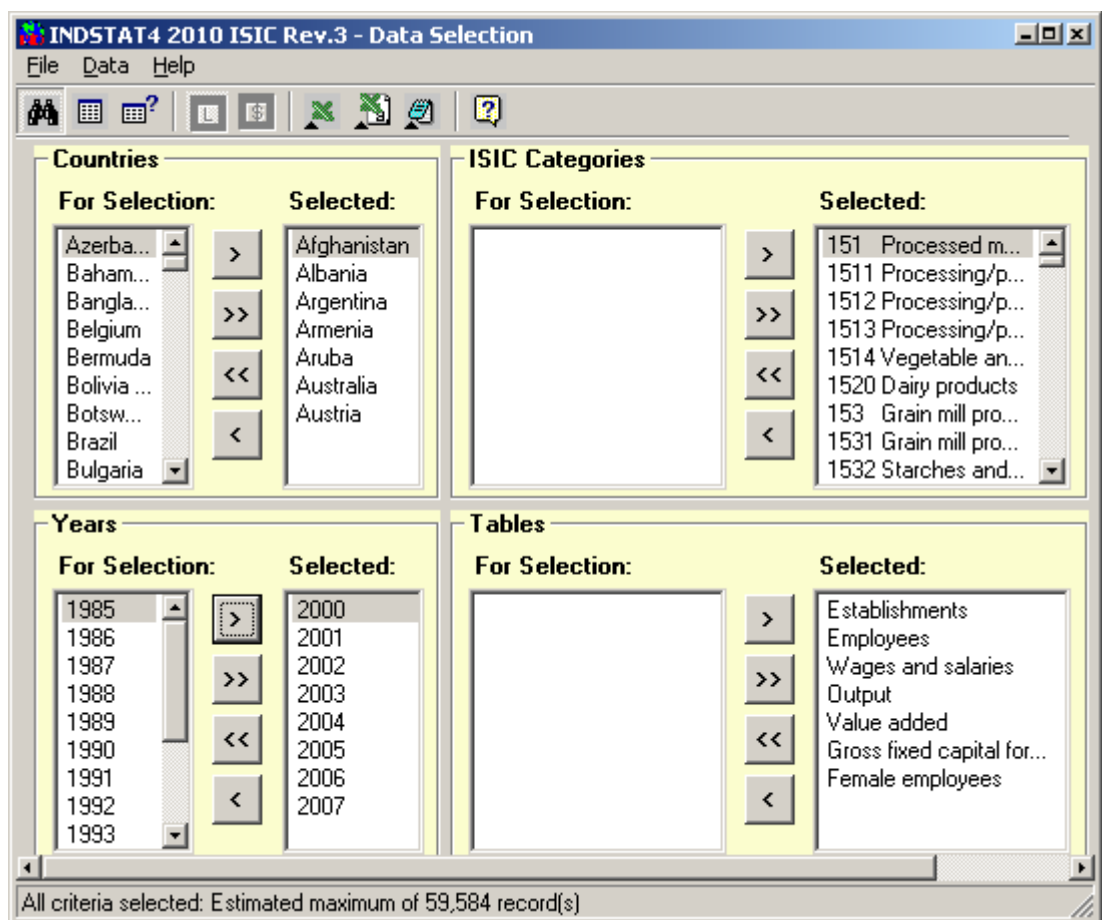
Below are the drop down menus and options:

File Exit

Data Browse, View availability, Export to Microsoft Excel, Export to CSV, Export to Text File

Help Online Help, Info

Main Window/Data Selection



When the program is started, the **Selection Board** window with its four **Selection Windows** is displayed. Use the mouse cursor to select the Countries, ISIC Categories, Years and Tables that are needed.

Selecting Data

To select all items in a 'For Selection' window, click the right double-arrow. All items will then appear in the respective list on the 'Selected' Window.

To select items individually, hold the CTRL key, click each required item and then click the right single-arrow. Each selected item will be added to the respective list on the 'Selected' Window.

To select a sequence of items, click the first required item and then hold the SHIFT key and click the last required item and then click the right single-arrow. All selected items will appear in the respective list on the 'Selected' Window.

Unselecting Data

To unselect items individually, highlight the item in the 'Selected' Window, then click the left single-arrow.

To unselect ALL items, click the left double-arrow; this will unselect all items.

To unselect a sequence of items, click the first required item and then hold the SHIFT key and click the last required item. Then click the left single-arrow.

Browse

After the selection criteria are made, the selected data can be browsed by clicking the

Browse button



	2000 (T)	2001 (T)	2002 (T)	2003 (T)	2004 (T)
151 Processed meat, fish,	24503	27421	30355	28588	30444
1511 Processing/preservir	14233 (1511A)	15138 (1511A)	17168 (1511A)	16662 (1511A)	17706 (1511A)
1512 Processing/preservir	... (1511A)	... (1511A)	... (1511A)	... (1511A)	... (1511A)
1513 Processing/preservir	7742	9783	10088	8984	9481
1514 Vegetable and anima	2529	2500	3099	2942	3257
1520 Dairy products	16664	20425	21556	23584	25067
153 Grain mill products; s	6963	7414	8540	9100	8868
1531 Grain mill products	2669	3029	3202	3455	3632
1532 Starches and starch
1533 Prepared animal feed	4294	4384	5338	5645	5235
154 Other food products	46879	53008	57500	62714	68060
1541 Bakery products	31973	35997	40009	44015	48791
1542 Sugar	0	0	0	0	0
1543 Cocoa, chocolate ar	740	1683	1712	1821	1621
1544 Macaroni, noodles &	3627	3870	4118	4497	4726
1549 Other food products	10539	11458	11661	12381	12922
155 Beverages	27811	34444	39713	43996	45097

‘SHOW VALUES IN’:

Data are by default displayed in units. For viewing data in other orders of magnitude, go to ‘Show Values in:’ and choose from the following options:

- Units
- Thousands (T)
- Millions (M)
- Billions (B)

Any magnitude other than units is marked with the respective character (T), (M), or (B), next to the year, e.g., 2000 (T). A new data display will automatically be presented in units again.

ISIC COMBINATION

A text in the brackets to the right of a value denotes an ISIC combination.

SELECTION OF TABLE

Toggling between tables can be made by clicking the appropriate button at the bottom of the display.

Browse Metadata

In support of the statistical data, relevant meta-information is available to the user.

This metadata can be browsed by clicking:

1. Country (right mouse click) - Show Metadata

In this window all the existing metadata associated with the given **country** are displayed, i.e., Data Supplier, Source, Deviation from ISIC, Reference Period, Scope, Adjustment for Non-response, Provisional Data and Related National Publications.

2. Table Button (e.g. **M Wages and salaries**) (right mouse click) - Show Metadata

In this window metadata are associated with the given **table**. Indicated are deviations from the United Nations Standard Concepts and Definitions for General Industrial Statistics. For detailed information, please see Annex VII.

3. YEAR (e. g. **1989**) (right mouse click) - Show Metadata

In this window:

- above-mentioned country or table specific metadata are shown for each **year** separately, in cases where metadata change over time.
- information about statistical definition is stored. (e.g. Output at factor values).

4. VALUE (e. g. **7216875**) (right mouse click) - Show Metadata


In this window metadata associated with the individual ISIC category are indicated.

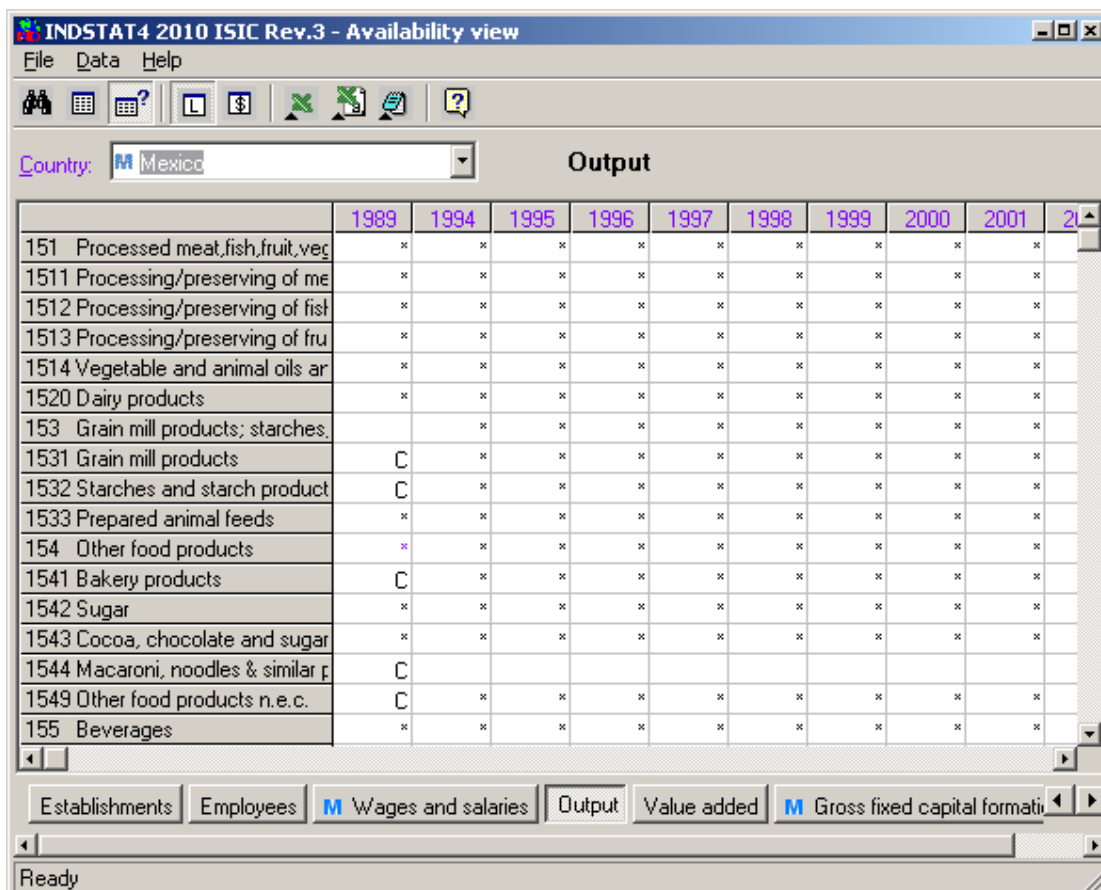
1 → Country: M Mexico Output in current ... Show Values in: Thousands (T)

	1989 (T)	1994 (T)	1995 (T)	1996 (T)
151 Processed meat, fish, fruit, veg	7971328	20215205	29975194	
1511 Processing/preserving of me	2537482	7387550	9623916	
1512 Processing/preserving of fish	678845	1486648	1728599	
1513 Processing/preserving of fru	1334753	4051741	5562262	
1514 Vegetable and animal oils ar	3420248	7289266	13060417	
1520 Dairy products	3690773	11973399	16431568	
153 Grain mill products; starches.	...	19234633	27579744	
1531 Grain mill products	7130597 (1531B)	11705518	16661531	
1532 Starches and starch product	... (1531B)	1367524	2175992	
1533 Prepared animal feeds	2658032	6161591	8742221	
154 Other food products	7216875	26735644	37848526	
1541 Bakery products	3568702 (1541A)	7426361	10596019	
1542 Sugar	2321875	7009451	9720053	
1543 Cocoa, chocolate and sugar	1326298	2063738	2567702	
1544 Macaroni, noodles & similar p	... (1541A)	
1549 Other food products n.e.c.	... (1531B)	10236094	14964752	
155 Beverages	8283713	29730562	38203355	



2 → Establishments Employees M Wages and salaries Output Value added M Gross fixed capital formati

Availability Display

When the Selection Criteria are sufficient, that is, at least one Country, ISIC, Year and Table have been selected, the Data Availability button  will become active. By clicking it, a table of data availability is displayed; data availability is indicated either by an asterisk (*) or by a character 'C' for the respective ISICs, Years and Countries highlighted in the left side column. The '*' indicates that data are separately available, while 'C' denotes that data are only available for two or more ISIC categories combined.




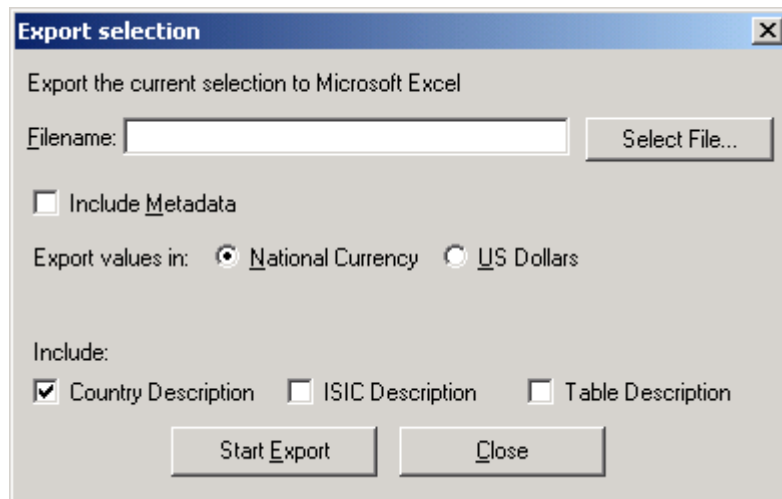
	1989	1994	1995	1996	1997	1998	1999	2000	2001	2002
151 Processed meat, fish, fruit, veg	*	*	*	*	*	*	*	*	*	*
1511 Processing/preserving of me	*	*	*	*	*	*	*	*	*	*
1512 Processing/preserving of fish	*	*	*	*	*	*	*	*	*	*
1513 Processing/preserving of fru	*	*	*	*	*	*	*	*	*	*
1514 Vegetable and animal oils ar	*	*	*	*	*	*	*	*	*	*
1520 Dairy products	*	*	*	*	*	*	*	*	*	*
153 Grain mill products; starches		*	*	*	*	*	*	*	*	*
1531 Grain mill products	C	*	*	*	*	*	*	*	*	*
1532 Starches and starch product	C	*	*	*	*	*	*	*	*	*
1533 Prepared animal feeds	*	*	*	*	*	*	*	*	*	*
154 Other food products	*	*	*	*	*	*	*	*	*	*
1541 Bakery products	C	*	*	*	*	*	*	*	*	*
1542 Sugar	*	*	*	*	*	*	*	*	*	*
1543 Cocoa, chocolate and sugar	*	*	*	*	*	*	*	*	*	*
1544 Macaroni, noodles & similar p	C									
1549 Other food products n.e.c.	C	*	*	*	*	*	*	*	*	*
155 Beverages	*	*	*	*	*	*	*	*	*	*

The Browse Data and Data Availability buttons   can be used to toggle between the Availability Display and Browse Data Display.

Export to EXCEL

To be able to run this function you need to have Microsoft Excel installed on your computer.

After selecting the required data, click the Export to Excel button  in order to export the values to Excel.



Define the Filename where the values are to be exported. By using the **Select File for Export** dialog, choose a proper directory to export your file to, select national currency or US Dollars.

Then press the '**Start Export**' button to execute Export.

The exported file consists of Data worksheet and Metadata worksheet (optional).

The Data worksheet structure is as follows:

- Table Code
- Table Description (optional)
- Country Code
- Country Description (optional)
- Year
- ISIC Code
- ISIC Description (optional)
- ISIC Combination (if applicable otherwise ISIC)
- Value
- Table Definition Code
- Table Description (optional)
- Source Code
- Update Year
- Unit Indicator

The Metadata worksheet structure is as follows:

Country Code

Country Description (optional)

Table Code

Table Description (optional)

Year

ISIC Code

ISIC Description (optional)

Note Class

Note

Export in ASCII (text) format or CSV (Comma Separated Values) format

After selecting the required data, click the Export Data to CSV File button  or the Export Data to Text File button .



Define the Filename where the values are to be exported. By using the **Select File for Export** dialog, choose a proper directory to export your file to, select national currency or US Dollars.

Then press the '**Start Export**' button to execute Export.

Output in ASCII (text) format or CSV (Comma Separated Values) format:

- Table Code
- Country Code
- Year
- ISIC
- ISIC Combination (if applicable otherwise ISIC)
- Value
- Table Definition Code
- Source Code
- Update Year
- Unit Indicator

Export METADATA

By clicking the '**Include Metadata**' button meta-information will be written into a CSV file (filename metadata.csv).

CONTACT POINT AT UNIDO

Shyam UPADHYAYA

P.O. Box 300

Statistics Unit

UNIDO

A-1400 Vienna, Austria

Fax: (+43-1) 26026-6802

E-mail: stat@unido.org

<http://www.unido.org/statistics>

Data users' feedback

We are striving to improve our products and to serve the needs of our data users better.

We ask our data users:

- Are you satisfied with our service?
- Do you have any suggestions for improving our products?

Please send your feedback, if any, to: stat@unido.org

ANNEXES

Annex I - Country Code List

INDSTAT4 2010 ISIC Rev.3 employs the Standard Country/Area Codes, as recommended by the United Nations Statistics Division. National currencies are indicated in parentheses.

Code	Country
004	Afghanistan (Afghani)
008	Albania (Leks)
032	Argentina (Pesos)
051	Armenia (Drams)
533	Aruba (Florins)
036	Australia (Dollars)
040	Austria (Euros)
031	Azerbaijan (Manat)
044	Bahamas (Dollars)
050	Bangladesh (Taka)
056	Belgium (Euros)
060	Bermuda (Dollars)
068	Bolivia (Plurinational State of) (Bolivianos)
072	Botswana (Pula)
076	Brazil (Reais)
100	Bulgaria (Leva)
116	Cambodia (Riels)
124	Canada (Dollars)
132	Cape Verde (Escudos)
152	Chile (Pesos)
446	China (Macao SAR) (Patacas)
156	China (Yuan)
170	Colombia (Pesos)
184	Cook Islands (Dollars)
191	Croatia (Kunas)
196	Cyprus (Euros)
203	Czech Republic (Koruny)
208	Denmark (Kroner)
214	Dominican Republic (Pesos)
218	Ecuador (US Dollars)
818	Egypt (Pounds)

232	Eritrea (Nakfa)
233	Estonia (Krooni)
231	Ethiopia (Birr)
242	Fiji (Dollars)
246	Finland (Euros)
250	France (Euros)
270	Gambia (Dalasis)
268	Georgia (Lari)
276	Germany (Euros)
288	Ghana (Cedis)
300	Greece (Euros)
320	Guatemala (Quetzales)
332	Haiti (Gourdes)
348	Hungary (Forints)
352	Iceland (Kronur)
356	India (Rupees)
360	Indonesia (Rupiahs)
364	Iran (Islamic Republic of) (Rials)
368	Iraq (Dinars)
372	Ireland (Euros)
376	Israel (New Sheqalim)
380	Italy (Euros)
392	Japan (Yen)
400	Jordan (Dinars)
398	Kazakhstan (Tenge)
404	Kenya (Shillings)
417	Kyrgyzstan (Soms)
418	Lao People's Dem. Rep. (Kips)
428	Latvia (Lats)
422	Lebanon (US Dollars)
426	Lesotho (Maloti)
440	Lithuania (Litas)
442	Luxembourg (Euros)
450	Madagascar (Ariary)
454	Malawi (Kwacha)
458	Malaysia (Ringgits)
462	Maldives (Rufiyaa)
470	Malta (Euros)

480	Mauritius (Rupees)
484	Mexico (Pesos)
496	Mongolia (Tugriks)
504	Morocco (Dirhams)
524	Nepal (Rupees)
528	Netherlands (Euros)
530	Netherlands Antilles (Guilders)
554	New Zealand (Dollars)
566	Nigeria (Nairas)
578	Norway (Kroner)
275	Occupied Palestinian Territory (US Dollars)
512	Oman (Rials)
586	Pakistan (Rupees)
590	Panama (Balboas)
598	Papua New Guinea (Kinas)
600	Paraguay (Guaranies)
604	Peru (New Soles)
608	Philippines (Pesos)
616	Poland (Zlotys)
620	Portugal (Euros)
634	Qatar (Riyals)
410	Republic of Korea (Won)
498	Republic of Moldova (Lei)
642	Romania (Lei)
643	Russian Federation (Roubles)
646	Rwanda (Francs)
682	Saudi Arabia (Riyals)
686	Senegal (CFA Francs)
688	Serbia (Dinars)
694	Sierra Leone (Leones)
702	Singapore (Dollars)
703	Slovakia (Euros)
705	Slovenia (Euros)
710	South Africa (Rand)
724	Spain (Euros)
144	Sri Lanka (Rupees)
736	Sudan (Pounds)
740	Suriname (Dollars)

752	Sweden (Kronor)
756	Switzerland (Francs)
760	Syrian Arab Republic (Pounds)
762	Tajikistan (Somon)
764	Thailand (Baht)
807	The f. Yugosl. Rep. of Macedonia (Denars)
776	Tonga (Pa'angas)
780	Trinidad and Tobago (Dollars)
792	Turkey (Liras)
795	Turkmenistan (Manat)
800	Uganda (Shillings)
804	Ukraine (Hryvnias)
826	United Kingdom (Pounds)
834	United Republic of Tanzania (Shillings)
840	United States of America (US Dollars)
858	Uruguay (Pesos)
704	Viet Nam (Dongs)
887	Yemen (Rials)
716	Zimbabwe (Dollars)

Annex II - ISIC Code List

INDSTAT4 2010 ISIC Rev.3 employs Revision 3 of the International Standard Industrial Classification of All Economic Activities (ISIC) at the 3- and 4-digit level, pertaining to the manufacturing sector.

Classification of data according to ISIC ensures international comparability of national data.

Code	Definition
151	Processed meat,fish,fruit,vegetables,fats
1511	Processing/preserving of meat
1512	Processing/preserving of fish
1513	Processing/preserving of fruit & vegetables
1514	Vegetable and animal oils and fats
1520	Dairy products
153	Grain mill products; starches; animal feeds
1531	Grain mill products
1532	Starches and starch products
1533	Prepared animal feeds
154	Other food products
1541	Bakery products
1542	Sugar
1543	Cocoa, chocolate and sugar confectionery
1544	Macaroni, noodles & similar products
1549	Other food products n.e.c.
155	Beverages
1551	Distilling, rectifying & blending of spirits
1552	Wines
1553	Malt liquors and malt
1554	Soft drinks; mineral waters
1600	Tobacco products
171	Spinning, weaving and finishing of textiles
1711	Textile fibre preparation; textile weaving
1712	Finishing of textiles
172	Other textiles
1721	Made-up textile articles, except apparel
1722	Carpets and rugs
1723	Cordage, rope, twine and netting
1729	Other textiles n.e.c.

Code	Definition
1730	Knitted and crocheted fabrics and articles
1810	Wearing apparel, except fur apparel
1820	Dressing & dyeing of fur; processing of fur
191	Tanning, dressing and processing of leather
1911	Tanning and dressing of leather
1912	Luggage, handbags, etc.; saddlery & harness
1920	Footwear
2010	Sawmilling and planing of wood
202	Products of wood, cork, straw, etc.
2021	Veneer sheets, plywood, particle board, etc.
2022	Builders' carpentry and joinery
2023	Wooden containers
2029	Other wood products; articles of cork/straw
210	Paper and paper products
2101	Pulp, paper and paperboard
2102	Corrugated paper and paperboard
2109	Other articles of paper and paperboard
221	Publishing
2211	Publishing of books and other publications
2212	Publishing of newspapers, journals, etc.
2213	Publishing of recorded media
2219	Other publishing
222	Printing and related service activities
2221	Printing
2222	Service activities related to printing
2230	Reproduction of recorded media
2310	Coke oven products
2320	Refined petroleum products
2330	Processing of nuclear fuel
241	Basic chemicals
2411	Basic chemicals, except fertilizers
2412	Fertilizers and nitrogen compounds
2413	Plastics in primary forms; synthetic rubber
242	Other chemicals
2421	Pesticides and other agro-chemical products
2422	Paints, varnishes, printing ink and mastics
2423	Pharmaceuticals, medicinal chemicals, etc.

Code	Definition
2424	Soap, cleaning & cosmetic preparations
2429	Other chemical products n.e.c.
2430	Man-made fibres
251	Rubber products
2511	Rubber tyres and tubes
2519	Other rubber products
2520	Plastic products
2610	Glass and glass products
269	Non-metallic mineral products n.e.c.
2691	Pottery, china and earthenware
2692	Refractory ceramic products
2693	Struct.non-refractory clay; ceramic products
2694	Cement, lime and plaster
2695	Articles of concrete, cement and plaster
2696	Cutting, shaping & finishing of stone
2699	Other non-metallic mineral products n.e.c.
2710	Basic iron and steel
2720	Basic precious and non-ferrous metals
273	Casting of metals
2731	Casting of iron and steel
2732	Casting of non-ferrous metals
281	Struct.metal products;tanks;steam generators
2811	Structural metal products
2812	Tanks, reservoirs and containers of metal
2813	Steam generators, except central heating hot water boilers
289	Other metal products; metal working services
2891	Metal forging/pressing/stamping/roll-forming
2892	Treatment & coating of metals
2893	Cutlery, hand tools and general hardware
2899	Other fabricated metal products n.e.c.
291	General purpose machinery
2911	Engines & turbines (not for transport equipment)
2912	Pumps, compressors, taps and valves
2913	Bearings, gears, gearing & driving elements
2914	Ovens, furnaces and furnace burners
2915	Lifting and handling equipment
2919	Other general purpose machinery

Code	Definition
292	Special purpose machinery
2921	Agricultural and forestry machinery
2922	Machine tools
2923	Machinery for metallurgy
2924	Machinery for mining & construction
2925	Food/beverage/tobacco processing machinery
2926	Machinery for textile, apparel and leather
2927	Weapons and ammunition
2929	Other special purpose machinery
2930	Domestic appliances n.e.c.
3000	Office, accounting and computing machinery
3110	Electric motors, generators and transformers
3120	Electricity distribution & control apparatus
3130	Insulated wire and cable
3140	Accumulators, primary cells and batteries
3150	Lighting equipment and electric lamps
3190	Other electrical equipment n.e.c.
3210	Electronic valves, tubes, etc.
3220	TV/radio transmitters; line comm. apparatus
3230	TV and radio receivers and associated goods
331	Medical, measuring, testing appliances, etc.
3311	Medical, surgical and orthopaedic equipment
3312	Measuring/testing/navigating appliances, etc.
3313	Industrial process control equipment
3320	Optical instruments & photographic equipment
3330	Watches and clocks
3410	Motor vehicles
3420	Automobile bodies, trailers & semi-trailers
3430	Parts/accessories for automobiles
351	Building and repairing of ships and boats
3511	Building and repairing of ships
3512	Building/repairing of pleasure/sport. boats
3520	Railway/tramway locomotives & rolling stock
3530	Aircraft and spacecraft
359	Transport equipment n.e.c.
3591	Motorcycles
3592	Bicycles and invalid carriages

Code	Definition
3599	Other transport equipment n.e.c.
3610	Furniture
369	Manufacturing n.e.c.
3691	Jewellery and related articles
3692	Musical instruments
3693	Sports goods
3694	Games and toys
3699	Other manufacturing n.e.c.
3710	Recycling of metal waste and scrap
3720	Recycling of non-metal waste and scrap
D	Total manufacturing

Annex III - ISIC Combination Code List

Many countries report data as a combination of two or more 3-digit or 4-digit ISIC categories.

Below is a table of the codes used to identify such ISIC combinations.

Code	ISIC Components
1511A	1511 1512
1511B	1511 1512 1513
1512A	1512 1513
1512B	1512 1513 1514
1513A	1513 1514
1514A	1514 2424
1514B	1514 1520
151A	151 1520 153 154 155
151B	151 1520
151C	151 1520 153 154
151D	151 1520 153 154 155 1600
151E	151 153 154
1520A	1520 153
1531A	1531 1532
1531B	1531 1532 1549
1531C	1531 1533
1532A	1532 1544
1532B	1532 1533
1532C	1532 1531
1533A	1533 154
153A	153 1549
153B	153 1544
153C	153 154
153D	153 1543 1544 1549
1541A	1541 1544
1541B	1541 1542
1542A	1542 1543
1542B	1542 1543 1544 1549
1542C	1542 1543 1544
1543A	1543 1542
1544A	1544 1549
1544B	1544 1532

1549A	1549 1544
1549B	1549 1532
1549C	1549 1542 1544
1549D	1549 1541 1542
1549E	1549 1513
1549F	1549 1543 1544
1549G	1549 1600
1549H	1549 1543
1549I	1549 1512 1513 1520 1541 1543
154A	154 1533
154B	154 1600
154C	154 155 1600
1551A	1551 1552 1554
1551B	1551 1552
1551C	1551 1552 1553
1551D	1551 1553
1551E	1551 1554
1552A	1552 1553
1552B	1552 1551 1553
1553A	1553 1554
1553B	1553 1554 1600
1554A	1554 1600
1554B	1554 1553
155A	155 1600
1600A	1600 155
1711A	1711 2430
1711B	1711 1712
1712A	1712 1721
171A	171 172 1730
171B	171 172 1730 191 1920 3710 3720
171C	171 172
171D	171 2430
171E	171 1722
171F	171 172 1730 1810 1820
171G	171 172 1730 1810 1820 191 1920
171H	171 1730
1721A	1721 1723
1721B	1721 1723 1729

1721C	1721 1722 1723
1721D	1721 171
1721E	1721 1722
1721F	1721 1723 1729 1730
1721G	1721 1722 1723 1729
1722A	1722 1723 1729
1722B	1722 1729
1723A	1723 1729
1723B	1723 1722
1729A	1729 1723
172A	172 1810 1820
172B	172 1730
172C	172 1810
172D	172 171
1730A	1730 1810
1730B	1730 1810 1820
1730C	1730 1729 1810
1730D	1730 1711 1729
1810A	1810 1820
1810B	1810 1820 1920
1810C	1810 1820 191 1920
1810D	1810 1920
1820A	1820 1911
1820B	1820 1912
1820C	1820 191 1920
1911A	1911 1912
1911B	1911 1820
1911C	1911 1820 1912
1912A	1912 1920
191A	191 1920
191B	191 1820
2010A	2010 202
2010B	2010 2021
2010C	2010 2022
2010D	2010 2022 210
2010E	2010 202 210
2010F	2010 202 3610
2010G	2010 202 210 221 222 2230

2010H	2010 202 3610 369
2010I	2010 202 331 3320 3330 3610 369
2021A	2021 2022
2021B	2021 2022 2023
2022A	2022 2023 2029
2022B	2022 2021
2022C	2022 2101 2102 2211 2221
2023A	2023 2029
2029A	2029 2023
2029B	2029 2520
2029C	2029 2010 2021 2022
2029D	2029 210 221 2221
2029E	2029 2021
202A	202 2520
202B	202 2010
202C	202 210
2101A	2101 2109 2212 2221
2101B	2101 2102
2101C	2101 2109 2212 2221 3720
2101D	2101 2102 2109
2102A	2102 2109
2102B	2102 2101
2109A	2109 2102
210A	210 221 222 2230
210B	210 2211 2212
210C	210 221
2211A	2211 2219
2211B	2211 2212 2219 2221 3691
2211C	2211 2212
2211D	2211 2213 2219 2221 2222
2211E	2211 2212 2213 2219
2212A	2212 2213
2212B	2212 2213 2219
2212C	2212 2221
2213A	2213 2230
2213B	2213 2219
2213C	2213 2219 2230
2213D	2213 2230 2422 2429

2219A	2219 2213
2219B	2219 222
221A	221 222
221B	221 222 2230
221C	221 2221 2230 2422 2429 3691
221D	221 2222 2230
221E	221 222 2230 2310 2320 2330
2221A	2221 2222
2221B	2221 2222 2230
2222A	2222 2230
2222B	2222 2221
222A	222 2230
2230A	2230 331 3320 369
2230B	2230 2213 3692
2310A	2310 2320 2330
2310B	2310 2320 2330 241 242 2430
2310C	2310 2330
2310D	2310 2320
2310E	2310 2320 241 242 2430 251 2520
2310F	2310 2320 2411
2310G	2310 2320 2330 241 242 2430 251 2520
2310H	2310 2230 2320
2320A	2320 2330
2320B	2320 241 242
2320C	2320 2412 2413
2320D	2320 2310 2330
2320E	2320 241
2320F	2320 2422 2423 2424
2320G	2320 2310
2330A	2330 241
2411A	2411 2412 2423
2411B	2411 2330
2411C	2411 2423
2411D	2411 2412
2411E	2411 2413
2411F	2411 2412 2413
2411G	2411 2320
2412A	2412 2421

2412B	2412 2413
2412C	2412 2411
2413A	2413 2430
2413B	2413 2310 2320 2330 2430
241A	241 242 2430
241B	241 242
241C	241 2430
241D	241 2423
241E	241 2310 2320 2330 2430
241F	241 242 2430 251 2520
241G	241 2421
241H	241 2421 2422 2423
241I	241 2310 2320 242 2430 251 2520
241J	241 1729
241K	241 2310 2320 2330 242 2430 251 2520
241L	241 2310 2320 2330 242 2430
2421A	2421 2422
2421B	2421 2422 2423 2424 2429
2422A	2422 2421
2422B	2422 2421 2430
2422C	2422 2423 2424 2429
2422D	2422 2423 2424
2423A	2423 2429 2430
2423B	2423 2421 2422
2424A	2424 2429 2430
2424B	2424 2430
2424C	2424 2429
2429A	2429 2412 2421
2429B	2429 3311
2429C	2429 2430
2429D	2429 2421 2430
242A	242 2430
2511A	2511 2519
2519A	2519 2511
2519B	2519 2520 2610 2691
251A	251 2520
251B	251 2520 2610 269
2520A	2520 2610 269

2610A	2610 269
2610B	2610 2691
2610C	2610 251 2520 269
2691A	2691 2692 2693
2691B	2691 2692
2691C	2691 2610 2693
2691D	2691 2692 2694 2696 2699
2691E	2691 2693
2692A	2692 2691 2693
2692B	2692 2693
2692C	2692 2693 2694 2695 2696 2699
2693A	2693 2691 2692
2693B	2693 2694
2694A	2694 2695
2694B	2694 2699
2694C	2694 2692 2695
2694D	2694 2691 2692 2693
2695A	2695 2696
2695B	2695 2692 2694
2695C	2695 2694
2696A	2696 2699
2696B	2696 2695 2699
2699A	2699 2310
2699B	2699 2710
2699C	2699 2695 2696
2699D	2699 2696
269A	269 2610
2710A	2710 2720 273
2710B	2710 2720 273 281 289
2710C	2710 2720 2731 2891 3710
2710D	2710 2720
2710E	2710 2720 273 2811 2812
2710F	2710 2720 273 281 289 291 292
2710G	2710 273
2710H	2710 2720 273 281 289 291 292 2930
2710I	2710 2720 273 3610 369
2710J	2710 2720 273 281 289 291 292 2930 3000
2710K	2710 2731 2811 2899

2720A	2720 273
2720B	2720 2891
2720C	2720 2811 2812
2720D	2720 2710 2731
2720E	2720 2710 273
2720F	2720 2731
2731A	2731 2732
273A	273 281 289 291 292 2930
273B	273 281
273C	273 2710 2720
2811A	2811 2812
2811B	2811 289
2812A	2812 2813
2813A	2813 2911 2913 2914 2919 2926 2929
281A	281 289
281B	281 2911 2913 2914 2919 2926 2929
281C	281 289 291
281D	281 289 291 292 2930
281E	281 289 291 292 2930 3000 3110 3120 3130 3140 3150 3190
281F	281 289 291 292 2930 3000
281G	281 289 291 292 2930 3000 3110 3120 3130 3140 3150 3190 3210* 3220 3230 3410 3420 3430 351 3520 3530 359
281H	281 289 291 292 2930 3000 3110 3120 3130 3140 3150 3190 3210* 3220 3230 331 3320 3330 3410 3420 3430 351 3520 3530 359 3610* 369
281I	281 289 291 292 2930 3000 3110 3120 3130 3140 3150 3190 3210* 3220 3230 331 3320 3330 3410 3420 3430 351 3520 3530 359
281J	281 289 331 3320 3330
281K	281 289 291 292 2930 3000 3110 3120 3130 3140 3150 3190 3210* 3220 3230
281L	281 2710 2720 273 289
2891A	2891 2892
2891B	2891 2892 2899
2892A	2892 2891
2892B	2892 2893
2893A	2893 2899
2893B	2893 2812 2891
2899A	2899 2927

2899B	2899 3699
2899C	2899 2893
289A	289 3699
2911A	2911 2912 2913
2911B	2911 2912 2913 2914 2915
2911C	2911 2914
2912A	2912 2911
2912B	2912 2913 2919
2912C	2912 2915
2912D	2912 2913 2915
2912E	2912 2913
2912F	2912 2913 2914
2913A	2913 2914
2914A	2914 2915 2919
2914B	2914 2930
2915A	2915 2924
2915B	2915 2914
2915C	2915 2919
2919A	2919 2912 2913 2914 2915
2919B	2919 2929
2919C	2919 2911
2919D	2919 292
2919E	2919 292 2930
291A	291 292 2930
291B	291 292 2930 3330
291C	291 2930
291D	291 292 2930 351 3520 3530 359
291E	291 292 2930 3110 3120 3130 3140 3150 3190 3410 3420 3430
291F	291 292 2930 3000
291G	291 292
291H	291 292 2930 3000 331 3320 3330
291I	291 292 2930 3000 3410 3420 3430 351 3520 3530 359
291J	291 292 2930 3000 3110 3120 3130 3140 3150 3190 3210 3220 3230
291K	291 292 2930 3000 3110 3120 3130 3140 3150 3190 3210 3220 3230* 3410 3420 3430 351 3520 3530 359
291L	291 292 2930 3000 331 3320 3330 3410 3420 3430 351 3520 3530* 359
291M	291 292 2930 3000 3110 3220 3230 331 3320 3330 3410 3420 3430*

351 3520 3530 359

2921A 2921 2924

2921B 2921 2913 2919

2921C 2921 2922

2922A 2922 2923

2922B 2922 2923 2924 2925 2926 2929

2922C 2922 2927

2923A 2923 2924 2925 2926 2927 2929

2923B 2923 2924

2923C 2923 2924 2925 2926 2929

2923D 2923 2924 2925 2926

2924A 2924 2923

2924B 2924 2929

2924C 2924 2925

2925A 2925 2927 2929

2925B 2925 2924

2925C 2925 2923 2926 2927

2926A 2926 2929

2926B 2926 2927

2927A 2927 2930

2927B 2927 2929

2927C 2927 2926

2929A 2929 2913 2923 2925 2926

2929B 2929 2927

2929C 2929 2922 2923 2924 2925 2926 2927

2930A 2930 2914

2930B 2930 3000

2930C 2930 3000 3110 3120 3130 3140 3150 3190 3210

2930D 2930 3000 3110 3120 3130 3140 3150 3190 3210 3220 3230 331 3320*
3330

3000A 3000 3110 3120 3130 3140 3150 3190 3210 3220 3230

3000B 3000 3110 3120 3130 3140 3150 3190 3210 3220 3230 331 3320 3330

3000C 3000 3110 3120 3130 3140 3150 3190

3000D 3000 3110 3120 3130 3140 3150 3190 331 351 359

3000E 3000 3110 3120 3130 3140 3150 3190 3210 3220 3230 331 3320 3330*
3410 3420 3430 351 3520 3530 359

3110A 3110 3120 3130 3140 3150 3190

3110B 3110 3120 3190

3110C	3110 3120 3130
3110D	3110 3120
3110E	3110 3120 3130 3140 3150 3190 3210 3220 3230
3110F	3110 3120 3130 3140
3120A	3120 3110
3120B	3120 3150 3190
3130A	3130 3140
3130B	3130 3140 3190
3130C	3130 3140 3150 3190
3140A	3140 3150 3190 3210
3140B	3140 3150
3140C	3140 3150 3190
3140D	3140 331
3140E	3140 3230 3311
3150A	3150 3140 3190
3150B	3150 3140
3150C	3150 3130 3140
3150D	3150 3190
3150E	3150 3210 3230
3190A	3190 3110 3120
3190B	3190 3220
3190C	3190 3210 3220 3230 331 3320 3330
3190D	3190 3140
3190E	3190 3150
3190F	3190 3140 3313
3190G	3190 3140 3150
3210A	3210 3220 3230
3210B	3210 3230
3210C	3210 3220
3220A	3220 3230
3220B	3220 3210
3220C	3220 3313
3220D	3220 3230 331 3320 3330
3230A	3230 3210 3220
3230B	3230 3311 3320
3230C	3230 331
3230D	3230 3220
3311A	3311 3312 3313 3320 3330

3311B	3311 3320
3311C	3311 3312 3313 3320
3311D	3311 3312 3313
3311E	3311 3312
3312A	3312 3313
3312B	3312 3311 3313 3320 3330
331A	331 3320 3330
331B	331 3320
331C	331 3330
331D	331 3320 3330 3610 369
331E	331 3320 3330 351 3520 3530 359
331F	331 3320 3330 3410 3420 3430 351 3520 3530 359
331G	331 2310 2320 2330 3320 3330 3610 369
3320A	3320 3330
3320B	3320 3313 3330
3320C	3320 3430
3320D	3320 331 3330
3410A	3410 3420 3430 351 3520 3530 359
3410B	3410 3420 3430
3410C	3410 3530
3410D	3410 3591
3410E	3410 3430
3410F	3410 3420
3410G	3410 291 292 2930 3000 3420 3430 351 3520 3530 359
3420A	3420 3410 3430
3420B	3420 3430
3430A	3430 3610
3430B	3430 351 3710
3430C	3430 3420
3511A	3511 3512
3511B	3511 3599
3511C	3511 3512 3610 3691 3699
3511D	3511 3592
3512A	3512 3511
351A	351 3520 3530 359
351B	351 3530
3520A	3520 3530
3520B	3520 3599

3520C	3520 351 3530 359
3530A	3530 3599
3530B	3530 359
3591A	3591 3592
3592A	3592 3591
3592B	3592 3591 3599
3599A	3599 3530
359A	359 3520 3530
359B	359 351 3520 3530
359C	359 3530
3610A	3610 369
3610B	3610 369 3710 3720
3610C	3610 369 3710
3610D	3610 1600 2010 202 210 241 242 2430 251 2520 281 289 291* 292 2930 331 3320 3330 351 3520 3530 359 369
3610E	3610 2710 2720 273 369
3610F	3610 3691 3699
3691A	3691 3692 3699
3691B	3691 3692
3691C	3691 3694
3692A	3692 3699
3692B	3692 3691 3693 3694 3699
3692C	3692 3693 3694 3699
3692D	3692 3693
3692E	3692 3694
3693A	3693 3694
3693B	3693 3592
3693C	3693 3692 3694
3694A	3694 3692 3693 3699
3694B	3694 3691 3692 3693 3699
3699A	3699 2696 2893 2925 2929 3130
3699B	3699 2310 2320 2330 3710 3720
3699C	3699 3710 3720
3699D	3699 3692
3699E	3699 2320 3710 3720
3699F	3699 1600 3710 3720
3699G	3699 1600
3699H	3699 2320 2412 3230 3530 3592

3699I	3699 3692 3693 3694
3699J	3699 1514 3230 3691
369A	369 2310 2320 2330 3710 3720
369B	369 2320 3710 3720
369C	369 3710 3720
369D	369 171 191 241 359
369E	369 1600
369F	369 1600 3710 3720
3710A	3710 3720

Annex IV - Table Code List

Code	Definition
01	Number of establishments
04	Employment
05	Wages and salaries (at current prices)
14	Output (at current prices)
20	Value added (at current prices)
21	Gross fixed capital formation (at current prices)
31	Number of female employees

Annex V - Table Definition Code List

Code	Definition
01	Number of establishments
02	Number of enterprises
03	Number of persons engaged
04	Number of employees
05	Wages and salaries paid to employees
12	Output at factor values
13	Output at producers' prices
14	Output (valuation not defined)*
18	Value added at factor values
19	Value added at producers' prices
20	Value added (valuation not defined)**
21	Gross fixed capital formation
31	Number of female employees

* Output at basic prices is also included in this category, please refer to metadata.

** Value added at basic prices is also included in this category, please refer to metadata.

Annex VI - Source Code List

Code	Definition
1	Data provided by: - national statistical offices through UNIDO questionnaires for non-OECD countries; - OECD for OECD member countries.
2	Data added/adjusted by UNIDO based on national sources.
3	Data added/adjusted by UNIDO based on other sources.

Annex VII - Standard Concepts and Definitions

(1) Number of establishments and number of enterprises:

An “establishment” is ideally a unit that engages, under a single ownership or control, in one, or predominantly one, kind of activity at a single location; for example, workshop or factory. A “kind-of-activity unit” differs from the establishment in that there is no restriction with respect to the geographical area in which a given kind of activity is carried out by a single legal entity. A “local unit”, on the other hand, comprises all activities carried out under a single ownership or control at a single location and differs from the establishment-type of unit in that there is no restriction on the range of these activities. An “enterprise” is a legal entity possessing the right to conduct business in its own name; for example, to enter into contracts, own property, incur liability for debts, and establish bank accounts.

(2) Number of persons engaged and number of employees:

The number of persons engaged is defined as the total number of persons who worked in or for the establishment during the reference year. However, homeworkers are excluded. The concept covers working proprietors, active business partners and unpaid family workers as well as employees. The figures reported refer normally to the average number of persons engaged during the reference year, obtained as the sum of the "average number of employees" during the year and the total number of other persons engaged measured for a single period of the year. The number of employees is including all persons engaged other than working proprietors, active business partners and unpaid family workers.

(3) Wages and salaries:

Wages and salaries include all payments in cash or in kind paid to "employees" during the reference year in relation to work done for the establishment. Payments include: (a) direct wages and salaries; (b) remuneration for time not worked; (c) bonuses and gratuities; (d) housing allowances and family allowances paid directly by the employer; and (e) payments in kind. Excluded are employers' contributions in respect of their employees paid to social security, pension and insurance schemes, as well as the benefits received by employees under these schemes and severance and termination pay.

(4) Output:

The measure of output normally reported is the census concept, which covers only activities of an industrial nature. The value of census output in the case of estimates compiled on a production basis comprises: (a) the value of sale of all products of the establishment; (b) the net change between the beginning and the end of the reference period in the value of work in progress

and stocks of goods to be shipped in the same condition as received; (c) the value of industrial work done or industrial services rendered to others; (d) the value of goods shipped in the same condition as received less the amount paid for these goods; and (e) the value of fixed assets produced during the period by the unit for its own use. In the case of estimates compiled on a shipment basis, the net change in the value of stocks of finished goods between the beginning and the end of the reference period is also included. Gross output is equivalent to census output plus the revenue from activities of a non-industrial nature. Valuation may be at factor costs, excluding all indirect taxes falling on production and including all current subsidies received in support of production activity, or at basic prices, excluding taxes on commodity and including commodity related subsidies, or at producers' prices, including all indirect taxes and excluding all subsidies.

(5) Value added:

The measure of value added normally reported is the census concept, which is defined as the value of census output less the value of census input, which covers: (a) value of materials and supplies for production (including cost of all fuel and purchased electricity); and (b) cost of industrial services received (mainly payments for contract and commission work and repair and maintenance work). If input estimates are compiled on a "received" rather than on a "consumed" basis, the result needs to be adjusted for the net change between the beginning and the end of the period in the value of stocks of materials, fuel and other supplies.

Total value added is the national accounting concept. It is ideally represented by the contribution of the establishments in each branch of activity to the gross domestic product. For the measure of total value added, the cost of non-industrial services is deducted from and the receipts for non-industrial services are added to census value added. The estimates, whether in terms of census value added or total value added, may be gross of depreciation and other provisions for capital consumption. The valuation may be at factor costs, at basic prices or at producers' prices, depending on the treatment of indirect taxes and subsidies.

(6) Gross fixed capital formation:

Gross fixed capital formation refers to the value of purchases and own-account construction of fixed assets during the reference year less the value of corresponding sales. The fixed assets covered are those (whether new or used) with a productive life of one year or more. These assets, which are intended for the use of the establishment, include fixed assets made by the establishment's own labour force for its own use. Major additions, alterations and improvements to existing assets, which extend their normal economic life or raise their productivity, are also included.

New fixed assets include all those that have not been previously used in the country. Thus, newly imported fixed assets are considered new whether or

not used before they were imported. Used fixed assets include all those that have been previously used within the country. Transactions in fixed assets include: (a) land; (b) buildings, other construction and land improvements; (c) transport equipment; and (d) machinery and other equipment. Countries that have started implementation of recent recommendations for industrial statistics might have extended the coverage of fixed assets to products of research and development, computer software and database and other intellectual property products.

Assets acquired from others are valued at purchasers' prices, which cover all costs directly connected with the acquisition and installation of the items for use. In principle, assets produced on own account are also valued in this manner. However, it may frequently be necessary to value such own-account production at explicit cost, including any imputations that may be required in respect of the employed own-account labour. Assets produced by one establishment of a multi-establishment enterprise for the use of another establishment of the same enterprise should be valued by the receiving establishment as though purchased from outside the enterprise. Sales of assets should be valued at the actual amounts realized rather than at book values.