

## Guide to accessing international macro data using Beyond 20/20 Web Data Server: National Statistics Time Series Data

ESDS International at Mimas, University of Manchester provides support for and access to the key international datasets produced by Inter-Governmental organisations such as the UK's National Statistics Office ([www.statistics.gov.uk/](http://www.statistics.gov.uk/)). The data is accessed via the delivery software Beyond 20/20 Web Data Server (WDS) and is freely available to UK FE and HE.

This guide is intended to introduce you to Beyond 20/20 WDS by carrying out a simple research task. The task is: Visualise and download the quarterly UK pound/Euro exchange rate figures from 1975 to 2004 using the National Statistics Time Series Data.

### Stage 1: Finding and selecting your data

Choose Time Series Data from the Direct Links to macro data drop down list on the ESDS International website. Alternatively use [http://esds.mcc.ac.uk/wds\\_natstats/](http://esds.mcc.ac.uk/wds_natstats/).

Input UK HE/FE Institutional username and password (Note: You will be re-directed to online ESDS registration and special conditions if not yet completed).



In the opening Reports screen click on Financial Statistics -Freestanding folder and select [NS TSD <month and year>] [Financial Statistics -Freestanding] [Quarterly values]

**Tip:** A small blue 'i' icon indicates summary information about a table or dimension item is available.

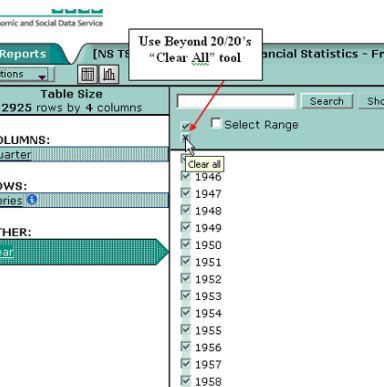
From the Actions option in the toolbar, click on Select items to view > Year.

Click the Clear all icon to remove all default selected years, click Select Range and tick boxes 1975 and 2004 to select range of dates.

Use Actions > Select Items to View to move onto the Series dimension and use the Clear all icon to remove all current default selections.

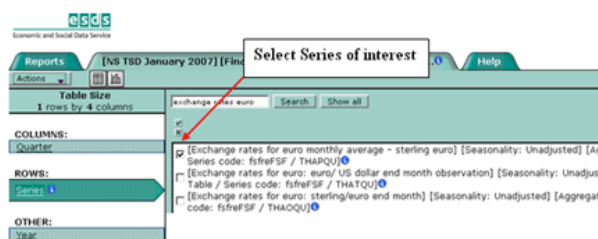
Type exchange rates and euro into the search input box and click Search.

Tick the Series item labeled [Exchange rates for euro monthly average -sterling euro] [Seasonality: Unadjusted] [NS Table / Series code: fsfreFSF/THAPQU]'.  
 [Exchange rates for euro monthly average - sterling euro] [Seasonality: Unadjusted] [Table / Series code: fsfreFSF / THAPQU] [Exchange rates for euro: euro / US dollar end month observation] [Seasonality: Unadjusted] [Table / Series code: fsfreFSF / THATQQU] [Exchange rates for euro: sterling/euro end month] [Seasonality: Unadjusted] [Aggregate code: fsfreFSF / THAPQU]



From the Actions option in the toolbar, click on Select items to view > Quarter.

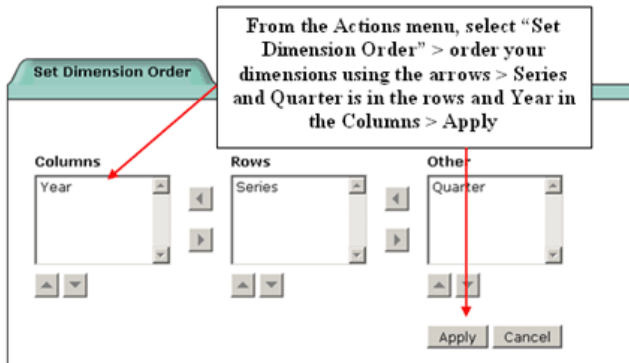
Four checkbox options are displayed, Q1-Q4-leave all four selected.



## Stage 2: Visualising the data

Use the **View as Table** tool at the top of the screen to View the report in table format.

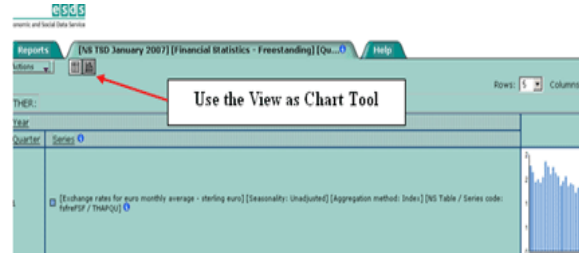
In the default table view, only the data from one Year is shown -use the arrows to scroll through the selected Years.



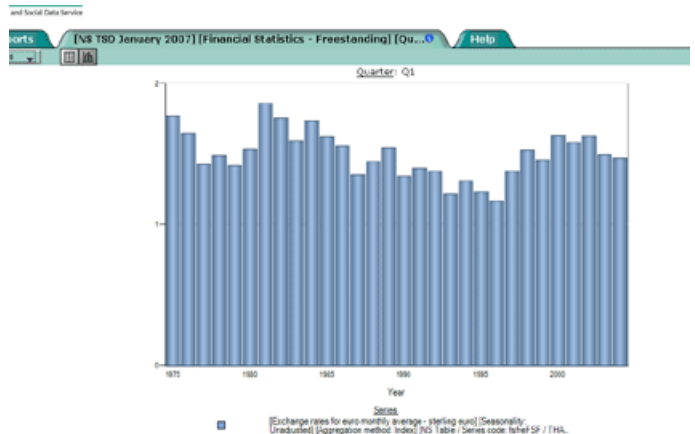
Use the **View as Chart** tool at the top of the screen to view the report in chart format.

Use **Actions** menu to change chart type, chart size and to view a printable version of the chart.

Use **Alt + Print Screen** to save the chart image as right clicking to 'Save picture as' only saves the chart itself and not the chart key or heading.



If you wish to see all data in one table, the format of the table can be changed by dragging and dropping the dimension headings -for example drag the Year dimension so that it is displayed just above the Quarter dimension heading. Or use the **Set Dimension Order** from the Actions menu



## Stage 3: Downloading the data:

The report must be table format to download to your pc. Click the **View as table** option to return to table view.

Use **Actions** menu > **Download report data...** and select your desired download format -\*ivt, \*csv, or \*xls.

**Congratulations!** You have completed the ESDS International introductory worksheet for Beyond 20/20 WDS using NS Time Series Data. Now you are ready to further explore the functionality of Beyond 20/20 WDS for extracting, manipulating and visualising international data. If you have any queries or feedback, please contact us on [international@esds.ac.uk](mailto:international@esds.ac.uk)

For further information on the topical and geographical coverage of the NS Time Series Data -please view our comprehensive dataset user guide on the ESDS International website under **User Support > User Guides**

*Note: All images shown in this worksheet are Copyright © Beyond 20/20Inc. All rights reserved*