

ORGANISATION FOR ECONOMIC  
CO-OPERATION AND DEVELOPMENT



ORGANISATION DE COOPÉRATION ET  
DE DÉVELOPPEMENT ÉCONOMIQUES

**DIRECTORATE FOR FINANCIAL AND ENTERPRISE AFFAIRS**

**OECD INTERNATIONAL DIRECT INVESTMENT  
STATISTICS**

**1985-2009**

**ELECTRONIC EDITION**

## TABLE OF CONTENTS

I.	INTRODUCTION .....	2
II.	STATISTICAL COVERAGE .....	3
A.	Data breakdown and period covered .....	3
B.	Geographical coverage .....	5
C.	Methodological information.....	9
III.	DATA SPECIFICATIONS.....	11
A.	Frequency of the data .....	11
B.	Units .....	11
IV.	TECHNICAL INFORMATION.....	13
A.	Installing Beyond 20/20™ and getting started .....	13
B.	Organisation of CD-ROMs .....	13
C.	Organisation of the database .....	13
D.	Languages.....	13
E.	How to use the International Direct Investment database .....	14

*The preparation of the Yearbook could not have been accomplished without the assistance of the OECD experts of the Workshop in International Investment Statistics and the national administrations which they represent. It is published on the responsibility of the Secretary-General of the OECD.*

### **I. INTRODUCTION**

The *OECD International Direct Investment Statistics* database gathers detailed statistics on

foreign direct investment (FDI) to and from the OECD area and draws upon a database developed by the Investment Division.<sup>1</sup> Statistics are collected regularly through a detailed questionnaire.<sup>2</sup> The objective is to provide a reliable and comprehensive source of information to OECD governments, potential investors and to the public at large. This series provides the basis for analyses of direct investment trends and for regular examinations of international direct investment policies in OECD Member countries.

The Statistics are based, for the most part, on FDI statistics compiled and published by Central Banks or Statistical Offices as well as on other sources such as FDI notifications or approvals. Although FDI statistics are presented according to a standardised format for all Member countries, there are limitations in data comparability due to differences in national definitions. For example, comparability of FDI data may be hampered by applying different methods of valuation and by differences in industrial classifications and geographical breakdowns as well. Methodological notes, reviewed by national statistical experts, provide information on the definitions applied and help to improve data comparability. Efforts to harmonise further FDI data collection across OECD countries are based on the recommendations of the *OECD Benchmark Definition of Foreign Direct Investment*, third edition.

The present database is organised with the data dissemination software *Beyond 20/20™*. It presents a useful tool to address the requirements of analysts. This document provides information on the organisation of the statistics. A separate document on how to use *Beyond 20/20™* includes technical information to facilitate the installation and manipulation of the files.

The following sections deal with the statistical coverage and methodology, data specifications and technical information. The Annex provides samples from the database.

## **II. STATISTICAL COVERAGE**

### **A. *Data breakdown and period covered***

The database is organised in two broad categories of statistics:

- *Country tables* provide detailed statistics for reporting countries,
- *Summary tables* provide aggregate information for the OECD area based on balance of payments and international investment position statistics.

---

1. OECD Directorate for Financial and Enterprise Affairs.

2. Joint OECD/EUROSTAT questionnaire on foreign direct investment statistics.

Both of these categories include various breakdowns, each presented in a matrix which is referred to as “table” in the terminology of *Beyond 20/20<sup>TM</sup>*:

*Country tables*

**2CsectorF. Direct investment flows by industrial sector**

*Breakdown:* inflows  
outflows

*Period covered:* 1985 to 2008

**2CsectorP. Direct investment positions<sup>3</sup> by industrial sector**

*Breakdown:* inward positions  
outward positions

*Period covered:* 1985 to 2008

**2CcontryF. Direct investment flows by country**

*Breakdown:* inflows  
outflows

*Period covered:* 1985-2008

**2CcontryP. Direct investment positions by country**

*Breakdown:* inward positions  
outward positions

*Period covered:* 1985-2008

*Summary tables*

**2Csummry. Comparative information for the OECD area**

*Breakdown:* inflows  
outflows  
inward positions  
outward positions

*Period covered:* direct investment flows 1990-2009  
direct investment positions 1990-2009

---

<sup>3</sup> Positions relate to stocks

**B. Geographical coverage**

Reporting countries: The statistics relate to 30 OECD Member countries.

*Australia*  
*Austria*  
*Belgium-Luxembourg*<sup>1</sup>  
*Belgium*<sup>2</sup>  
*Canada*  
*Czech Republic*  
*Denmark*  
*Finland*  
*France*  
*Germany*  
*Greece*  
*Hungary*  
*Iceland*  
*Ireland*  
*Italy*  
*Japan*  
*Korea*  
*Luxembourg*<sup>2</sup>  
*Mexico*  
*Netherlands*  
*New Zealand*  
*Norway*  
*Poland*  
*Portugal*  
*Slovak Republic*  
*Spain*  
*Sweden*  
*Switzerland*  
*Turkey*  
*United Kingdom*  
*United States*

1. *until 2001*

2. *from 2002*

Partner countries:

**OECD**

Australia  
Austria  
Belgium  
BLEU<sup>4</sup>  
Canada  
Czech Republic  
Denmark  
Finland  
France  
Germany  
Greece  
Hungary  
Iceland  
Ireland  
Italy  
Japan  
Korea, Republic of (South Korea)  
Luxembourg  
Mexico  
Netherlands  
New Zealand  
Norway  
Poland  
Portugal  
Slovakia  
Spain  
Sweden  
Switzerland  
Turkey  
United Kingdom  
United States  
Czechoslovakia<sup>7</sup>  
OECD - Unallocated

**EUROPE**

**EUROPE (Excluding OECD)**

Andorra  
Albania

**BALTIC COUNTRIES**

Estonia  
Lithuania

Latvia  
Belarus  
Bosnia and Herzegovina  
Bulgaria  
Croatia  
Cyprus  
Faroe Islands  
Gibraltar  
Guernsey  
Holy See (Vatican City State)  
Isle of Man  
Jersey  
Liechtenstein  
Macedonia, the Former Yugoslav Republic of  
Malta  
Moldova, Republic of  
Montenegro, Republic of<sup>5</sup>  
Romania  
Russian Federation  
San Marino  
Serbia, Republic of<sup>5</sup>  
Serbia and Montenegro  
Slovenia  
Ukraine  
USSR<sup>7</sup>  
Yugoslavia<sup>6</sup>

**EUROPE Unallocated**

**AFRICA**

**NORTH AFRICA**

Algeria  
Egypt  
Libyan Arab Jamahiriya  
Morocco  
Tunisia  
North Africa - Unallocated

**OTHER AFRICAN COUNTRIES (Excluding North Africa)**

Angola  
Benin  
Botswana  
British Indian Ocean Territory  
Burkina Faso

---

<sup>4</sup> Belgium-Luxembourg

<sup>5</sup> From 2007

<sup>6</sup> Data available until 2003

<sup>7</sup> Data available until 1991

Burundi  
 Cameroon  
 Cape Verde  
 Central African Republic  
 Chad  
 Comoros  
 Congo  
 Congo, the Democratic Republic of the  
 Côte d'Ivoire  
 Djibouti  
 Equatorial Guinea  
 Eritrea  
 Ethiopia  
 Gabon  
 Gambia  
 Ghana  
 Guinea  
 Guinea-Bissau  
 Kenya  
 Lesotho  
 Liberia  
 Madagascar  
 Malawi  
 Mali  
 Mauritania  
 Mauritius  
 Mozambique  
 Namibia  
 Niger  
 Nigeria  
 Rwanda  
 Sao Tome and Principe  
 Senegal  
 Seychelles  
 Sierra Leone  
 Somalia  
 South Africa  
 St. Helena  
 Sudan  
 Swaziland  
 Tanzania, United Republic of  
 Togo  
 Uganda  
 Zambia  
 Zimbabwe  
 Africa excluding North African countries-  
 Unallocated  
**AFRICA Unallocated**  
**AMERICA**  
**AMERICA (Excluding OECD)**  
**NORTH AMERICA**

**NORTH AMERICA (Excluding OECD)**  
 Greenland  
**CENTRAL AMERICA**  
**CENTRAL AMERICA (Excluding OECD)**  
 Anguilla  
 Antigua and Barbuda  
 Aruba  
 Bahamas  
 Barbados  
 Belize  
 Bermuda  
 Cayman Islands  
 Costa Rica  
 Cuba  
 Dominica  
 Dominican Republic  
 El Salvador  
 Grenada  
 Guatemala  
 Haiti  
 Honduras  
 Jamaica  
 Montserrat  
 Netherlands Antilles  
 Nicaragua  
 Panama  
 St. Kitts and Nevis  
 St. Lucia  
 St. Vincent and the Grenadines  
 Trinidad and Tobago  
 Turks and Caicos Islands  
 Virgin Islands, British  
 Virgin Islands, U.S.  
 Central America - Unallocated  
**SOUTH AMERICA**  
 Argentina  
 Bolivia  
 Brazil  
 Chile  
 Colombia  
 Ecuador  
 Falkland Islands (Malvinas)  
 Guyana  
 Paraguay  
 Peru  
 Suriname  
 Uruguay  
 Venezuela  
 South America - Unallocated  
**AMERICA Unallocated**

**ASIA****ASIA (Excluding OECD)****NEAR AND MIDDLE EAST**

Iran, Islamic Republic of

Israel

**GULF ARABIAN COUNTRIES**

Bahrain

Iraq

Kuwait

Oman

Qatar

Saudi Arabia

United Arab Emirates

Yemen

Gulf Arabian countries - Unallocated

**NEAR AND MIDDLE EAST COUNTRIES****OTHER THAN GULF STATES**

Armenia

Azerbaijan

Georgia

Jordan

Lebanon

Palestinian Territory, Occupied

Syrian Arab Republic

Near and Middle East countries excluding

Gulf states - Unallocated

**Near and Middle East - Unallocated****OTHER ASIAN COUNTRIES (Excluding Near and Middle East)****OTHER ASIAN COUNTRIES (Excluding Near and Middle East and OECD)**

Afghanistan

Bangladesh

Bhutan

Brunei Darussalam

Cambodia (Kampuchea)

China

Hong Kong

India

Indonesia

Kazakhstan

Korea, Dem. People's Republic of (North Korea)

Kyrgyzstan

Lao People's Democratic Republic

Macao

Malaysia

Maldives

Mongolia

Myanmar

Nepal

Pakistan

Philippines

Singapore

Sri Lanka

Taiwan, Province of China

Tajikistan

Thailand

Timor\_Leste

Turkmenistan

Uzbekistan

Viet Nam

Other asian countries - Unallocated

Other central/Eastern Europe

**ASIA Unallocated****OCEANIA & POLAR REGIONS****OCEANIA & POLAR REGIONS (Excluding OECD)**

Antarctica

American Samoa

Bouvet Island

Cocos (Keeling) Islands

Cook Islands

Christmas Island

Fiji

Micronesia, Federal States of

Heard Island and McDonald Islands

South Georgia and the South Sandwich Islands

Guam

Kiribati

Marshall Islands

Northern Mariana Islands

New Caledonia

Norfolk Island

Nauru

Niue

French Polynesia

Papua New Guinea

Pitcairn

Palau

Solomon Islands

French Southern Territories

Tonga

Tokelau

Tuvalu

US Minor Outlying Islands

Vanuatu

Wallis and Futuna

Samoa

Oceania &amp; Polar Regions - Unallocated

**TOTAL WORLD Unallocated**

**TOTAL WORLD**

**TOTAL WORLD (Excluding OECD)**

**Economic Zones<sup>8</sup>**

ACP countries	French Franc zone
African ACP countries	Latin America countries
Caribbean ACP countries	Maghreb countries
Pacific ACP countries	Mashrek countries
ASEAN countries	MERCOSUR
CIS countries	NAFTA
EU15	NICs1
EU25	NICs2A
EU27	NICs2LA
EFTA	OPEC countries
	Mediterranean Basin countries

**C. *Methodological information***

Methodological country notes are provided within the *Beyond 20/20<sup>TM</sup>* tables. They can be accessed through the menu "DIMENSION" or "ITEM", by selecting "Summary" as shown below.

---

<sup>8</sup> A full description of the economic zones is available on the database

Beyond 20/20 Browser

File Edit View Dimension Item Data Window Help

Summary...

Sort...  
Save Sort Order...  
Search...

DIRECT INVENTORY REPORTING

Reverse  
Show All  
Reset

SECTOR

PRIMARY SECTOR

Agriculture

Mining and of which:

MANUFACTURE of which:

Service Sector

Electricity, Gas and Water

Construction

Trade and Repairs

Hotels and Restaurants

Transports, Communication

of which: Total land, sea and air transport

Telecommunications

Financial Intermediation

of which: Monetary intermediation

Other financial intermediation

of which: Financial holding companies

Insurance and activities auxiliary to insurance

Total other financial intermediation and insurance activities

Real Estate and Business Activities

of which: Real estate

of which: Other Business

RIAL SECTOR

(US\$ million)

TYPE OF FLOWS: Inflows by industrial sector

TIME	1993	1994	1995	1996	1997
	962	2,904	4,813	8,474	7,295
	-159	104	-118	-36	127
	1,121	2,800	4,931	8,510	7,168
	-1,213	1,665	3,863	8,842	4,462
	13,905	19,673	28,739	34,500	36,228
	150	-1,375	5,652	1,829	-133
	1,902	1,119	2,348	9,991	4,786
	8,960	11,108	14,452	10,455	17,059
	934	3,123	1,506	6,053	5,482
	1,400	2,685	2,413	1,344	4,154
	33	890	885	3,732	2,227
	35,796	22,519	25,219	33,479	47,223
	418	-49	1,050	904	2,419
	-92	376	-24	-607	914
	6,969	7,317	7,892	10,753	12,595
	-894	460	-639	-738	-1,149
	1,292	4,004	695	5,643	1,465
	1,216	183	168	-83	959
	76	3,821	527	5,726	506
	27,092	8,310	14,695	12,407	22,008
	2,379	3,800	6,879	555	5,840
	23,815	1,751	4,009	4,443	5,078
	-118	470	1,250	507	178
	898	2,759	3,807	7,409	11,090
	24,713	4,510	7,816	11,852	16,168
	733	2,219	-408	3,337	5,452
	196	259	-639	541	658
	238	118	1,222	1,388	2,518

View summary for the active dimension

Start Microsoft Word - ENG98.D... Beyond 20/20 Browser 12:28 PM

### III. DATA SPECIFICATIONS

#### A. *Frequency of the data*

All data are annual and based on the calendar year, unless otherwise indicated.

#### B. *Units*

For each table (2CsectorF, 2CsectorP, 2CcontryF, 2CcontryP and 2Csummy), two different sets of data are available:

- (i) in US dollars;
- (ii) In national currencies.

Australia	Australian dollars, million
Austria	Euros, million
Belgium-Luxembourg	Euros, million
Belgium	Euros, million
Canada	Canadian dollars, million
Czech Republic	Czech koruna, million
Denmark	Danish kroner, million
Finland	Euros, million
France	Euros, million
Germany	Euros, million
Greece	Euros, million
Hungary	Forints, million
Iceland	Icelandic kroner, million
Italy	Euros, million
Japan	Japanese yen, million
Korea *	n.a.
Mexico *	n.a.
Netherlands	Euros, million
New Zealand	New Zealand dollars, million
Norway	Norwegian kroner, million
Poland **	n.a.
Portugal	Euros, million
Slovak Republic	Slovak koruna, million
Spain	Euros, million
Sweden	Swedish kroner, million
Switzerland	Swiss francs, million
Turkey *	n.a.
United Kingdom	Pounds sterling, million
United States	US dollars, million

\* *Data available only in US dollar million.*

\*\* *Direct investment data by industry sector and by country for Poland available only in US dollar million.*

**C. Industry classification**

<b>595</b>	<b>AGRICULTURE AND FISHING</b>
<b>1495</b>	<b>MINING AND QUARRYING</b>
	<i>of which</i>
1100	<i>Extraction of crude petroleum and natural gas; service activities incidental to oil and gas</i>
<b>3995</b>	<b>MANUFACTURING</b>
	<i>of which</i>
1605	<i>Food products</i>
2295	<i>Total (1805 + 2205)</i>
1805	<i>Textiles and wearing apparel</i>
2205	<i>Wood, publishing and printing</i>
2595	<i>Total (2300 + 2400 + 2500)</i>
2300	<i>Refined petroleum &amp; other treatments</i>
2400	<i>Chemical products</i>
	<i>of which</i>
2423	<i>Pharmaceuticals, medicinal chemical and botanical products</i>
2500	<i>Rubber and plastic products</i>
2995	<i>Total (2805 + 2900)</i>
2805	<i>Metal products</i>
2900	<i>Mechanical products</i>
3295	<i>Total (3000 + 3200)</i>
3000	<i>Office machinery and computers</i>
3200	<i>Radio, TV, communication equipments</i>
3300	<i>Medical, precision and optical instruments, watches and clocks</i>
3595	<i>Total (3400 + 3500)</i>
3400	<i>Motor vehicles</i>
3500	<i>Other transport equipments</i>
	<i>of which</i>
3530	<i>Manufacture of aircraft and spacecraft</i>
<b>4195</b>	<b>ELECTRICITY, GAS AND WATER</b>
<b>4500</b>	<b>CONSTRUCTION</b>
<b>5095</b>	<b>TOTAL SERVICES</b>
<b>5295</b>	<b>TRADE AND REPAIRS</b>
5000	<i>Sale, maintenance and repair of motor vehicles and motor cycles; retail sale of automotive fuel</i>
5100	<i>Wholesale trade and commission trade, except of motor vehicles and motor cycles</i>
5200	<i>Retail trade, except of motor vehicles and motor cycles; repair of personal and household goods</i>
<b>5500</b>	<b>HOTELS AND RESTAURANTS</b>
<b>6495</b>	<b>TRANSPORTS, STORAGE AND COMMUNICATION</b>
6395	<i>Transport and storage</i>
	<i>of which</i>
6000	<i>Land transport</i>
6100	<i>Water transport</i>
	<i>of which</i>
6110	<i>Sea and coastal water transport</i>
6200	<i>Air transport</i>
6300	<i>Supporting and auxiliary transport activities; activities of travel agencies</i>
6400	<i>Post and telecommunications</i>
	<i>of which</i>
6410	<i>Post and courier activities</i>
6420	<i>Telecommunications</i>
<b>6895</b>	<b>FINANCIAL INTERMEDIATION</b>
6500	<i>Financial intermediation, except insurance and pension funding</i>
	<i>of which</i>
6510	<i>Monetary intermediation</i>
6520	<i>Other financial intermediation</i>
	<i>of which</i>
6524	<i>Financial holding companies</i>
6600	<i>Insurance</i>
6700	<i>Activities auxiliary to financial intermediation</i>
<b>7395</b>	<b>REAL ESTATE, RENTING AND BUSINESS ACTIVITIES</b>
7000	<i>Real estate</i>
7100	<i>Renting of machinery and equipment without operator and of personal and household goods</i>
7200	<i>Computer activities</i>
7300	<i>Research and development</i>
7400	<i>Other business activities</i>
	<i>of which</i>
7410	<i>Legal, accounting, book-keeping and auditing activities; tax consultancy; market research and public opinion polling; business and management consulta</i>
	<i>of which</i>
7415	<i>Management holding companies</i>
7440	<i>Advertising</i>
<b>9995</b>	<b>OTHER SERVICES</b>
	<i>of which</i>
9200	<i>Recreational, cultural and sporting activities</i>
9996D	<i>Unallocated</i>
<b>9997</b>	<b>SUB-TOTAL</b>
9998	<i>Private purchases and sales of real estate</i>
<b>9999</b>	<b>TOTAL</b>
<b>0100</b>	<b>Primary sector</b>

**D. Conventional signs**

“..” designates that data are not available.

**IV. TECHNICAL INFORMATION**

**A. *Installing Beyond 20/20<sup>TM</sup> and getting started***

The user should refer to the technical documentation, *Quick Start Guide*, provided in this package.

**B. *Organisation of CD-ROMs***

CD-ROMs are provided for this database including:

- the database on international direct investment
- Beyond 20/20<sup>TM</sup> software

**C. *Organisation of the database***

As indicated above, the database is organised as individual tables. See Section II. *Statistical coverage* for a description of tables.

Tables are organised according to “dimensions” specific to each data set.

<b>Table</b>	<b>Dimension 1</b>	<b>Dimension 2</b>	<b>Dimension 3</b>	<b>Dimension 4</b>
<b>2CsectorF</b>	REPORTING CTRY	TYPE OF FLOW	SECTOR	TIME
<b>2CsectorP</b>	REPORTING CTRY	TYPE OF FDI	SECTOR	TIME
<b>2CcountryF</b>	REPORTING CTRY	TYPE OF FLOW	PARTNER COUNTRY	TIME
<b>2CcountryP</b>	REPORTING CTRY	TYPE OF FDI	PARTNER COUNTRY	TIME
<b>2Csumry</b>	REPORTING CTRY	TYPE OF DATA	TIME	-

Within each table, all “dimensions” are included even when data are not available or not applicable. Therefore, users should take into account this feature of the database when using the data or when downloading into their own system.

**D. *Languages***

Methodological notes and all textual information included in the tables are available both in English and French.

**E. *How to use the International Direct Investment database***

- a) Double click on the icon for *Beyond 20/20*<sup>TM</sup> to access the browser.
- b) *Beyond 20/20*<sup>TM</sup> is menu driven and easy to use. The *Quick Start Guide* provides useful technical information.
- c) To open a table, click on the menu option "File", then "Open", and choose the file you want to select "2Ccontry" or "2Csector", etc.
- d) Data can be sorted by selecting one or more of the "dimensions" listed above under Section IV "Technical information", *C. Organisation of the database*.
- e) Extraction of data into the user's own system is easy to handle through the menu option "File; Save as", which offers several formats.
- f) Other features such as printing, charting, reorganising the data display, etc., are included in menu driven options (see also the *Quick Start Guide*).

# ANNEX

## Examples of tables

Figure 1: 2Csector. Direct investment by industrial sector

DIRECT INVESTMENT BY INDUSTRIAL SECTOR						
REPORTING CTRY: United States (US\$ million)		TYPE OF FLOWS: Inflows by industrial sector				
SECTOR	TIME	1993	1994	1995	1996	1997
<b>PRIMARY SECTOR</b>		962	2,904	4,813	8,474	7,295
Agriculture and Fishing		-159	104	-118	-36	127
Mining and Quarrying		1,121	2,800	4,931	8,510	7,168
of which: Extraction of petroleum and gas		-1,213	1,665	3,863	8,842	4,462
<b>MANUFACTURING</b>		13,905	19,673	28,739	34,500	36,228
of which: Food products		150	-1,375	5,652	1,829	-133
Total textile and wood activities		1,902	1,119	2,348	9,991	4,786
Total petroleum, chemical, rubber, plastic products		8,960	11,108	14,452	10,455	17,059
Total metal and mechanical products		934	3,123	1,506	6,053	5,482
Total machinery, computers, RTV, communication		1,400	2,685	2,413	1,344	4,154
Total vehicles and other transport equipments		33	890	885	3,732	2,227
<b>SERVICE SECTOR</b>		35,796	22,519	25,219	33,479	47,223
Electricity, Gas and Water		418	-49	1,050	904	2,419
Construction		-92	376	-24	-607	914
Trade and Repairs		6,969	7,317	7,892	10,753	12,595
Hotels and Restaurants		-894	460	-639	-738	-1,149
Transports, Communication		1,292	4,004	695	5,643	1,465
of which: Total land, sea and air transport		1,216	183	168	-83	959
Telecommunications		76	3,821	527	5,726	506
Financial Intermediation		27,092	8,310	14,695	12,407	22,008
of which: Monetary intermediation		2,379	3,800	6,879	555	5,840
Other financial intermediation		23,815	1,751	4,009	4,443	5,078
of which: Financial holding companies		-118	470	1,250	507	178
Insurance and activities auxiliary to insurance		898	2,759	3,807	7,409	11,090
Total other financial intermediation and insurance activities		24,713	4,510	7,816	11,852	16,168
Real Estate and Business Activities		733	2,219	-408	3,337	5,452
of which: Real estate		196	259	-639	541	658
Other Services		222	222	222	222	222

Figure 2: 2Csector. Direct investment by industrial sector (example of chart)

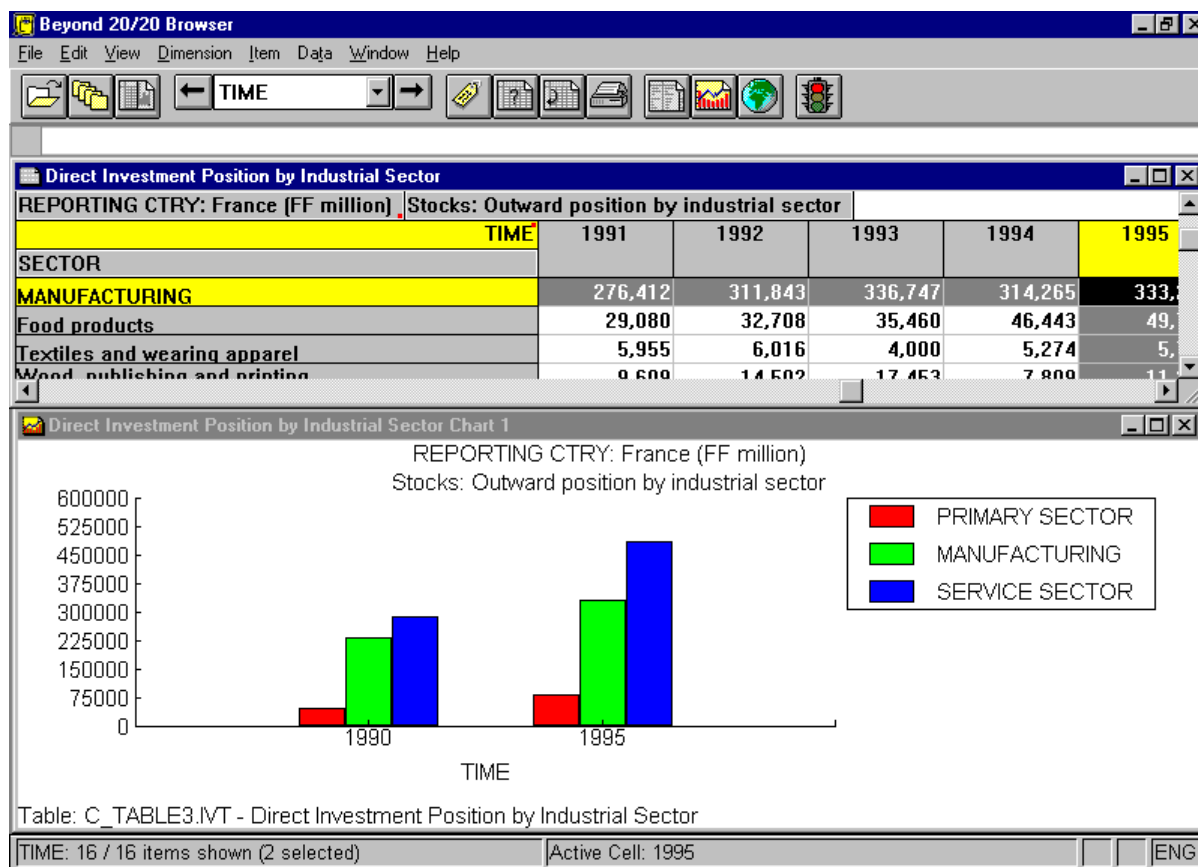


Figure 3: 2Ccountry. Direct investment by country

Beyond 20/20 Browser

File Edit View Dimension Item Data Window Help

REPORTING CTRY: Germany (DM million) Stocks: Inward position by country

TIME	1985	1986	1987	1988	1989	1990	1991
PARTNER COUNTRY							
OECD AREA	86,387	91,596	98,111	105,063	139,047	161,894	171,111
Australia	102	114	246	309	220	228	
Austria	1,139	1,239	1,372	1,522	2,240	2,629	
Belgium-Luxembourg	1,983	1,919	1,977	2,279	2,786	2,877	
Canada	851	1,016	942	1,024	1,575	1,631	
Czech Republic	-	-	-	-	-	-	
Denmark	646	767	886	1,064	1,339	1,556	
Finland	265	376	517	662	1,239	1,463	
France	5,516	5,859	6,151	6,922	9,617	11,276	
Germany	-	-	-	-	-	-	
Greece	48	42	43	48	95	88	
Hungary	57	62	81	86	82	119	
Iceland	-	-	-	-	-	-	
Ireland	16	16	8	8	8	40	
Italy	1,256	1,670	1,756	2,271	3,496	3,916	
Japan	5,295	6,200	6,438	8,048	9,548	11,887	
Korea	106	146	170	254	274	515	
Mexico	4	5	8	9	4	8	
Netherlands	11,595	11,344	12,991	14,975	22,973	26,349	

REPORTING CTRY: 28 / 28 items shown Active Cell: DEU ENG

Figure 4: 2Ccountry. Direct investment by country (example of map)

