

Guide to accessing international macro data using Beyond 20/20 Web Data Server: IMF Balance of Payments Statistics

ESDS International at MIMAS, University of Manchester provides support for and access to the key international datasets produced by Inter-Governmental organisations such as the International Monetary Fund (IMF). The data is accessed via the delivery software Beyond 20/20 Web Data Server (WDS) and is freely available to UK FE and HE.

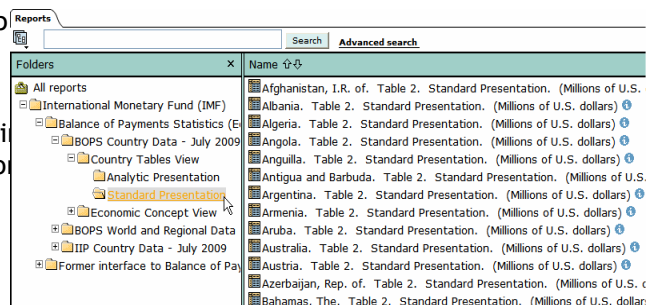
This guide is intended to introduce you to Beyond 20/20 WDS by carrying out a simple research task. The task is: to visualise and download the Net Current Account figures for the United Kingdom for the period 1995-2004 using the IMF's Balance of Payments Statistics (BOPS).

Stage 1: Finding and selecting your data

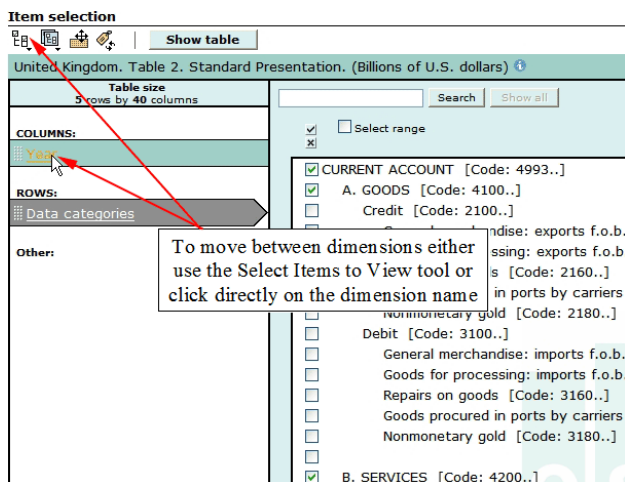
Choose IMF BOPS data from the Direct Links to macro data drop down list on the ESDS International website. Alternatively use http://esds.mcc.ac.uk/wds_bops/

Input UK HE/FE Institutional username and password in the login window. (Note: You will be re-directed to online ESDS registration and special conditions if not yet completed).

In the opening Reports screen click on **Balance of Payments Statistics** folder > **BOPS Country Data - <month of release>** > **Country Tables View** > **Standard Presentation** and finally scroll down and select **'United Kingdom. Table 2. Standard Presentation. (Billions of U.S. dollars).'**



Tip: Each BOPS Data Category has a 4 character code. Further details are provided in the BOPS comprehensive dataset user guide www.esds.ac.uk/international/support/user_guides/imf/bops.asp



Click on the **Data Categories** dimension name and use the **Clear All [x]** tool to deselect all categories.

The Data Categories codes for the UK's Net Current Account figures are:

- 4993 = UK Net Current Account
- 4100 = UK Net Goods
- 4200 = UK Net Services
- 4300 = UK Net Income
- 4379 = UK Net Current Transfers

Using the search input box at the top of the screen, first type **4993** and click **Search**. Select the Data Category that is returned using the tick box and type in the next code, click **Search** and again select. Do this for each code in turn.

Use the **Select items to view** tool and select **Year**. Alternatively, click directly on **Year** under the Columns heading.

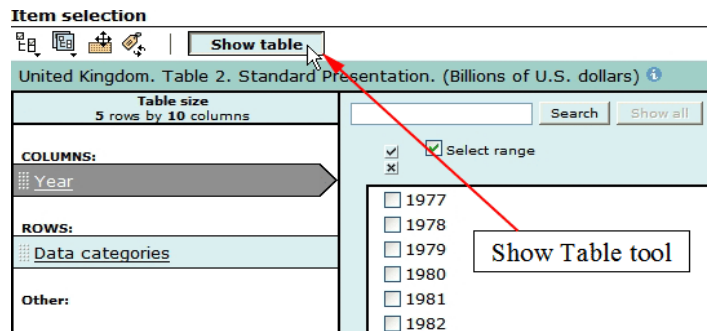
Use the **Clear All** tool to deselect all years, then tick **Select Range** and click on **1995** tick box followed by **2004** tick box. This will select all years within the specified range.

You have now completed the Finding and Selecting data stage and can move on to visualising your data.

Stage 2: Visualising the data

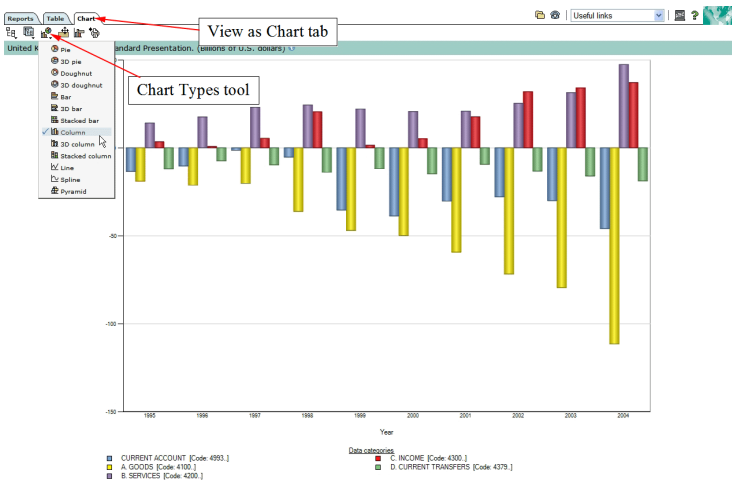
Use the **Show Table** tool at the top of the screen to view the report in table format.

Click on the blue icon to view any Data Categories notes.



Tip: To alter the format of the report, simply drag and drop the dimension headings or use the Set Dimension Order icon.

Use the **Chart** tab at the top of the screen to view the report in chart format.



Use the various icons from the toolbar in the top left of the interface to change chart type and to view a printable version of the chart.

Use **Alt + Print Screen** to save the chart image as right clicking to 'Save picture as' only saves the chart itself and not the chart key or heading.

Tip: The layout i.e. row, column configuration and content is downloaded exactly as it appears on screen so manipulate the data prior to download

Stage 3: Downloading the data:

The report must be table format to download to your pc. Click the **Table** tab at the top of the screen to return to table view.

Use the **Download** icon and select your desired download format -*ivt, *csv, or *xls.

Congratulations! You have completed the ESDS International introductory worksheet for Beyond 20/20 WDS using IMF BOPS. Now you are ready to further explore the functionality of Beyond 20/20 WDS for extracting, manipulating and visualising international data. If you have any queries or feedback, please contact us on international@esds.ac.uk

For further information on the topical and geographical coverage of the IMF BOPS -please view our comprehensive dataset user guide on the ESDS International website under **Support > User Guides**

Note: All images shown in this worksheet are Copyright © Beyond 20/20Inc. All rights reserved