

# ESDS Government Research Poster Series N<sup>o</sup>.2 British Crime Survey



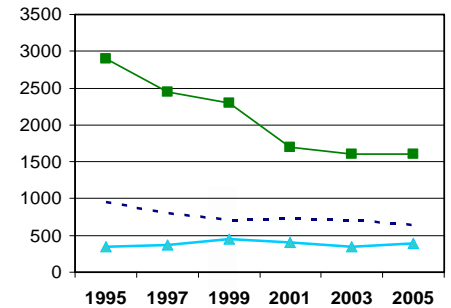
Economic and Social Data Service



The British Crime Survey (BCS) is a key source of information on crime and victimisation used by government and researchers.

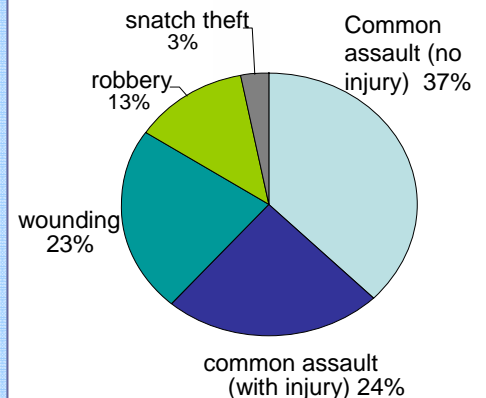
## Violent crime

...has been falling in the BCS - in contrast to offences recorded by the police (including all sexual offences)

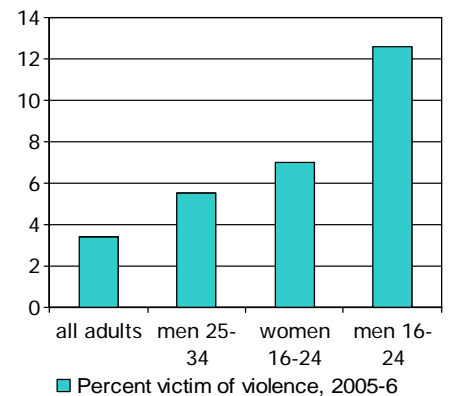


Legend: ■ common assault - - - Wounding ▲ robbery

## Types of violent offence



## Who is at risk?



Men are more at risk of all violence except domestic violence.

## About the BCS:

Respondents are asked about crimes they have experienced in the last year.



Property Crimes (e.g. burglary) and Personal crimes (e.g. theft from the person) are reported.

Includes:

- Domestic violence
- Crimes not reported to police
- Sexual offences
- Fear of Crime



Data has been collected since 1982. Since 2001 BCS data have been collected annually. Questions are asked the same way each year.

To find out more:

Economic and Social Data Service:

- To access research & teaching datasets
- To obtain documentation
- To get news about the survey and events

[www.esds.ac.uk/government/bcs](http://www.esds.ac.uk/government/bcs)

For help contact [govsurveys@esds.ac.uk](mailto:govsurveys@esds.ac.uk)

Tel: (0161) 275 1980

Results to left: fig 5.2, 5.4 and 5.6 of Walker A, Kershaw & Nicholls (2006) 'Crime Statistics in England and Wales 2005/06' Home Office Statistical Bulletin 12/06 (National Statistics) London

[www.esds.ac.uk/government](http://www.esds.ac.uk/government)

